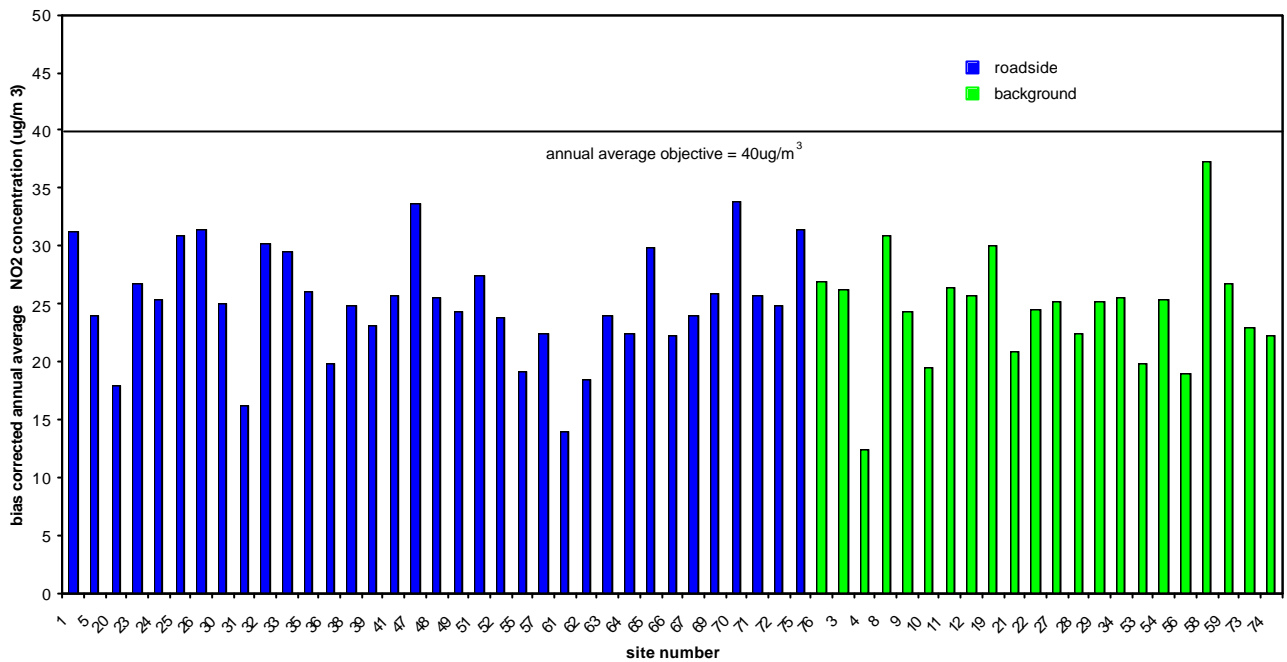
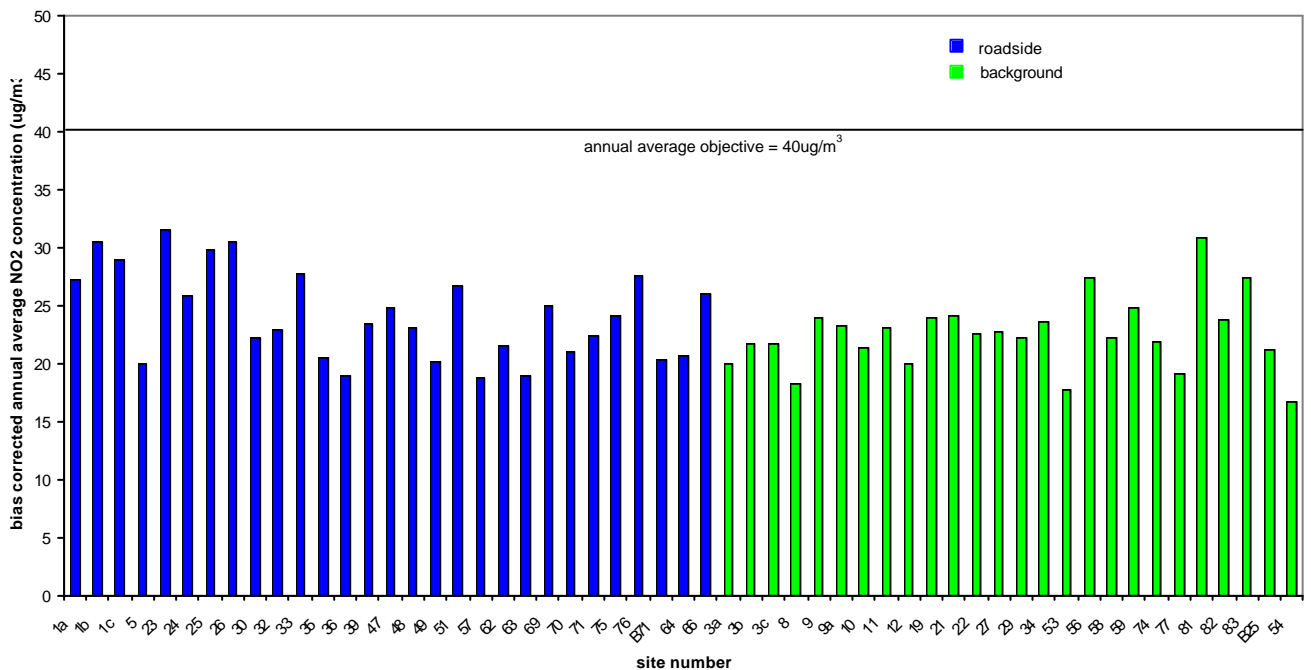


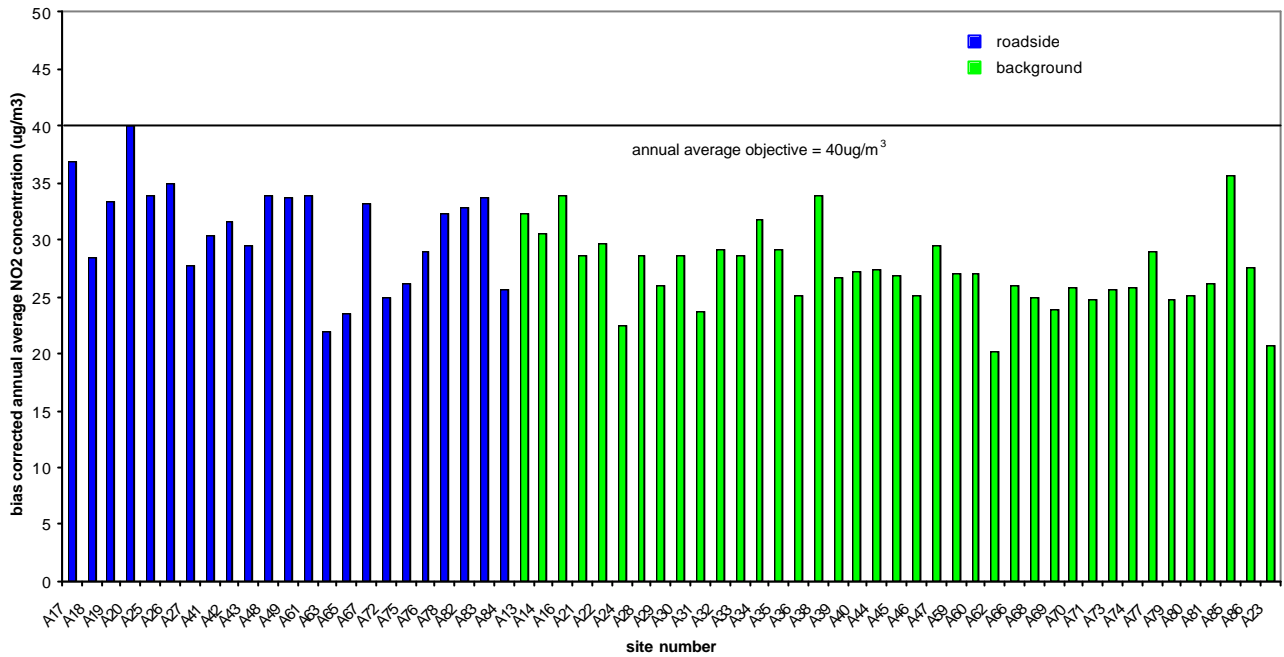
**Figure 14 :** Bias corrected annual average nitrogen dioxide concentrations for city wide survey 5 tubes outside the AQMA (July 2002 to June 2003)



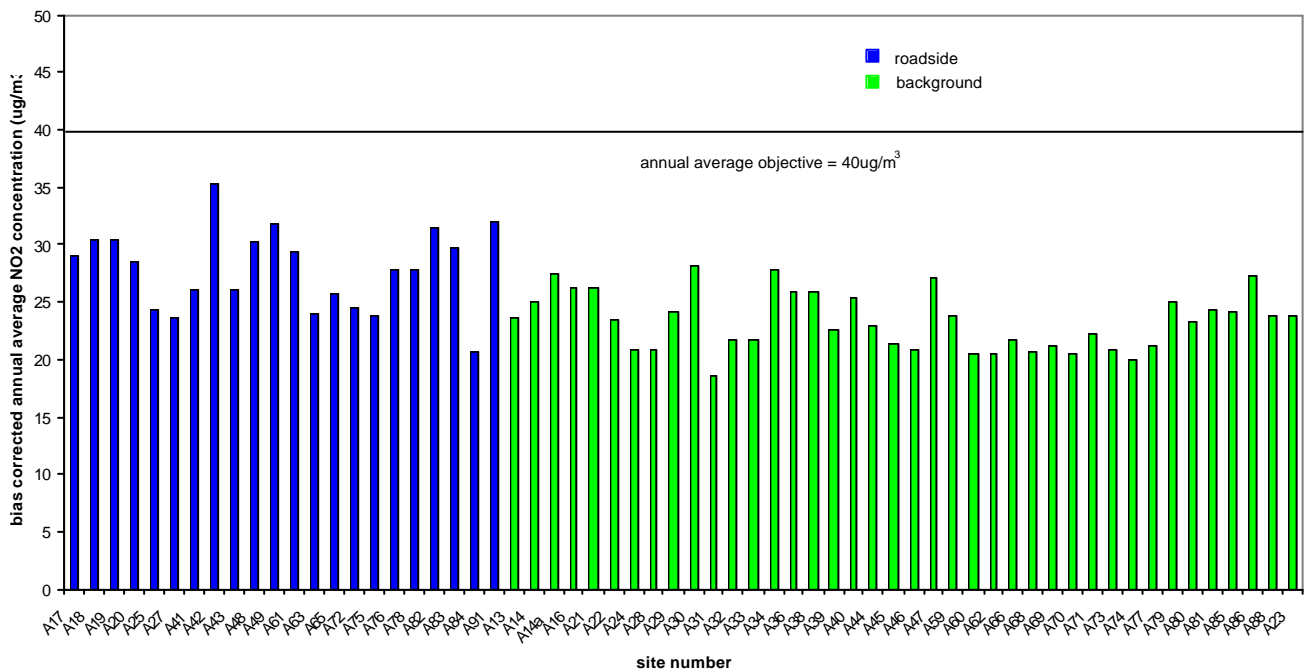
**Figure 15 :** Bias corrected annual average nitrogen dioxide concentrations for city wide survey 6 tubes outside the AQMA (July 2003 to June 2004)



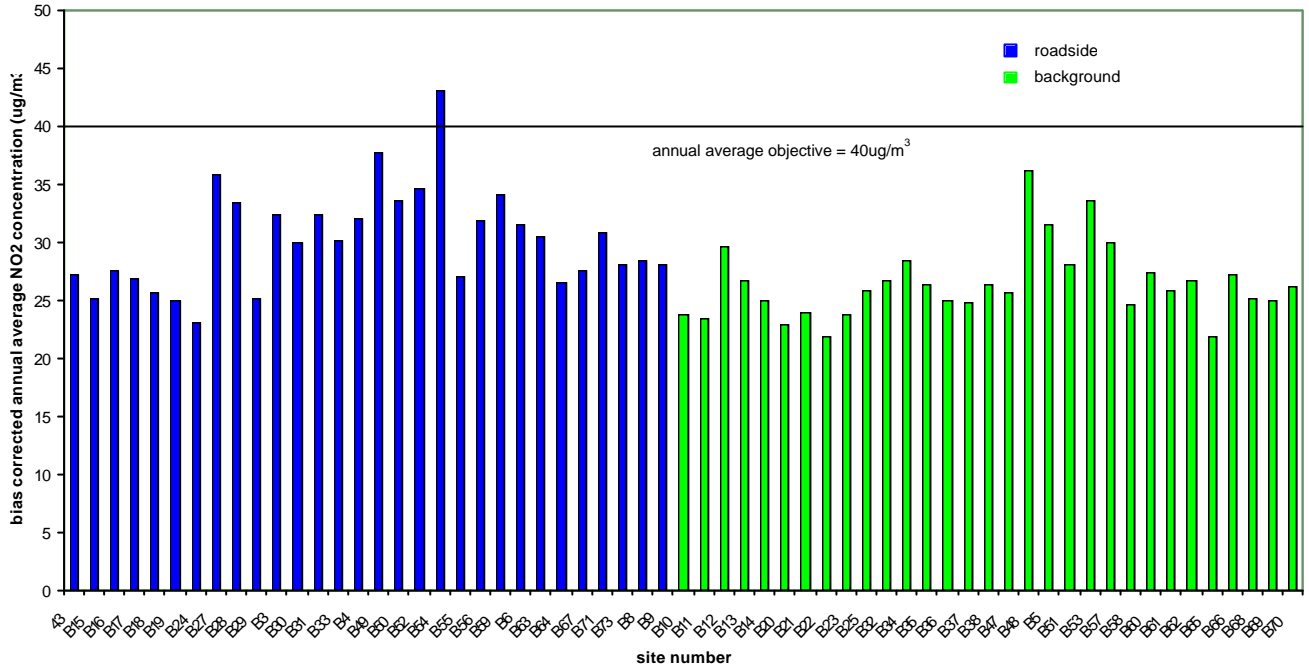
**Figure 16 :** Bias corrected annual average nitrogen dioxide concentrations for survey A tubes outside the AQMA (August 2002 to July 2003)



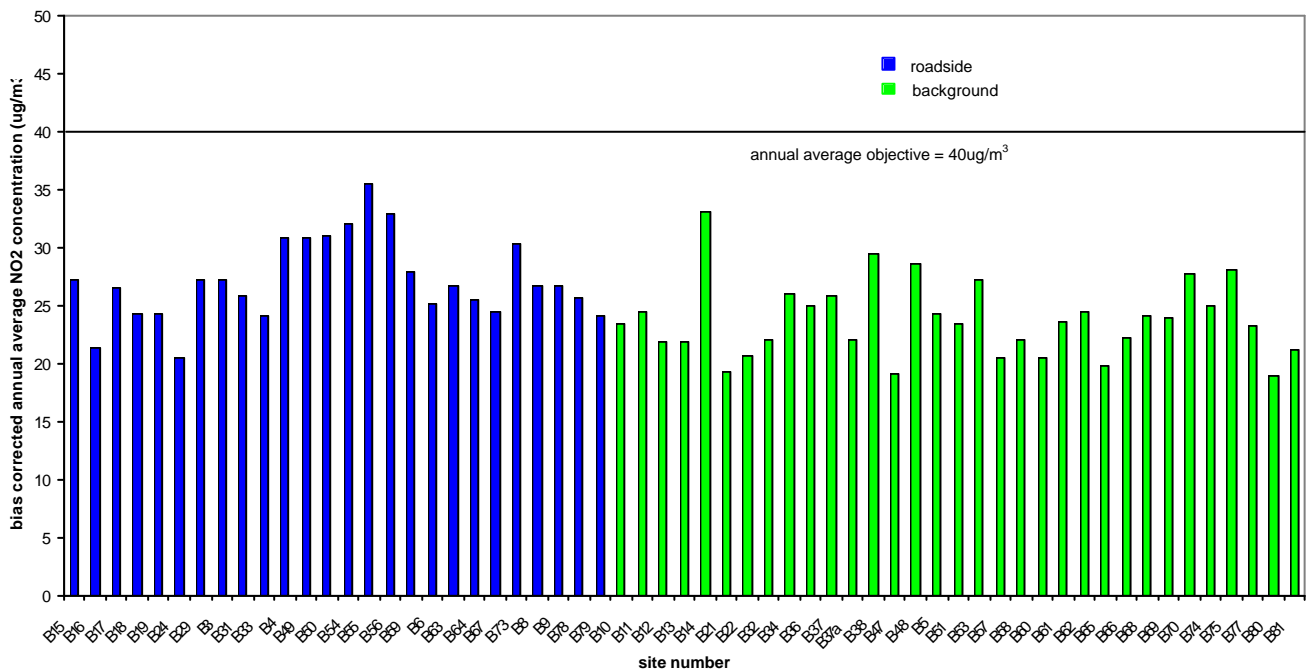
**Figure 17 :** Bias corrected annual average nitrogen dioxide concentrations for survey A tubes outside the AQMA (August 2003 to July 2004)



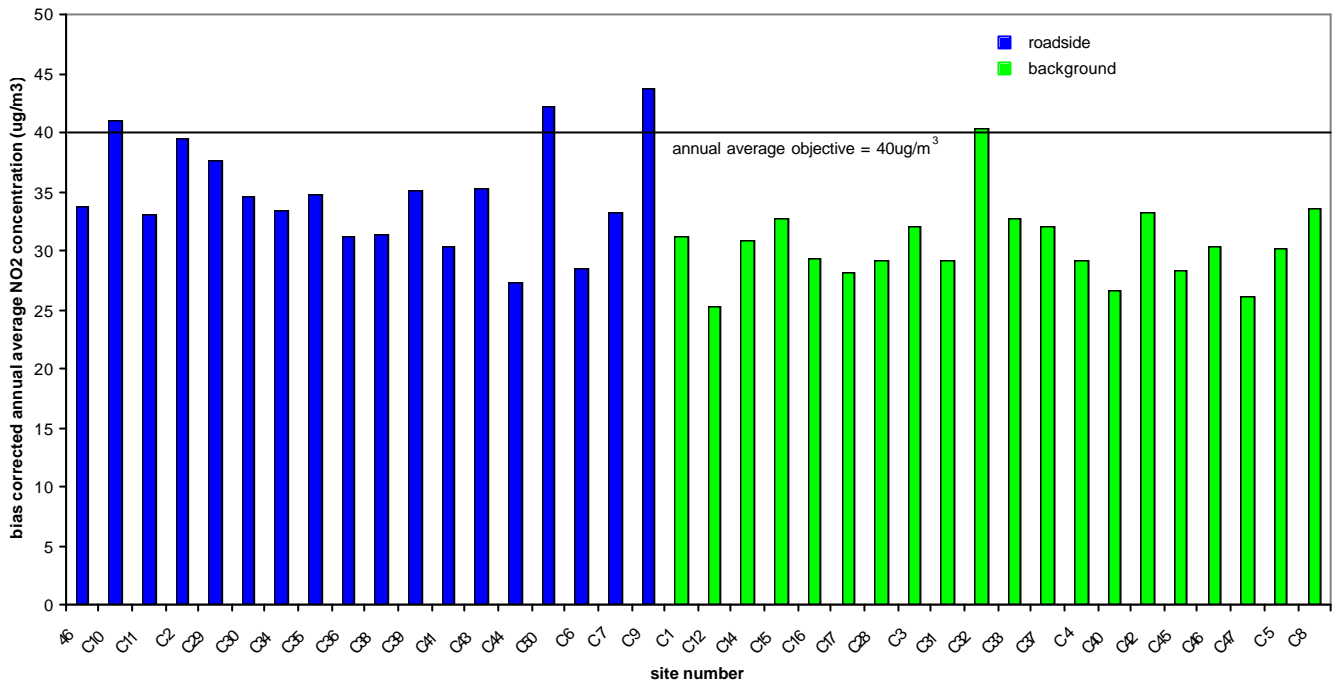
**Figure 18 :** Bias corrected annual average nitrogen dioxide concentrations for survey B tubes outside the AQMA (August 2002 to July 2003)



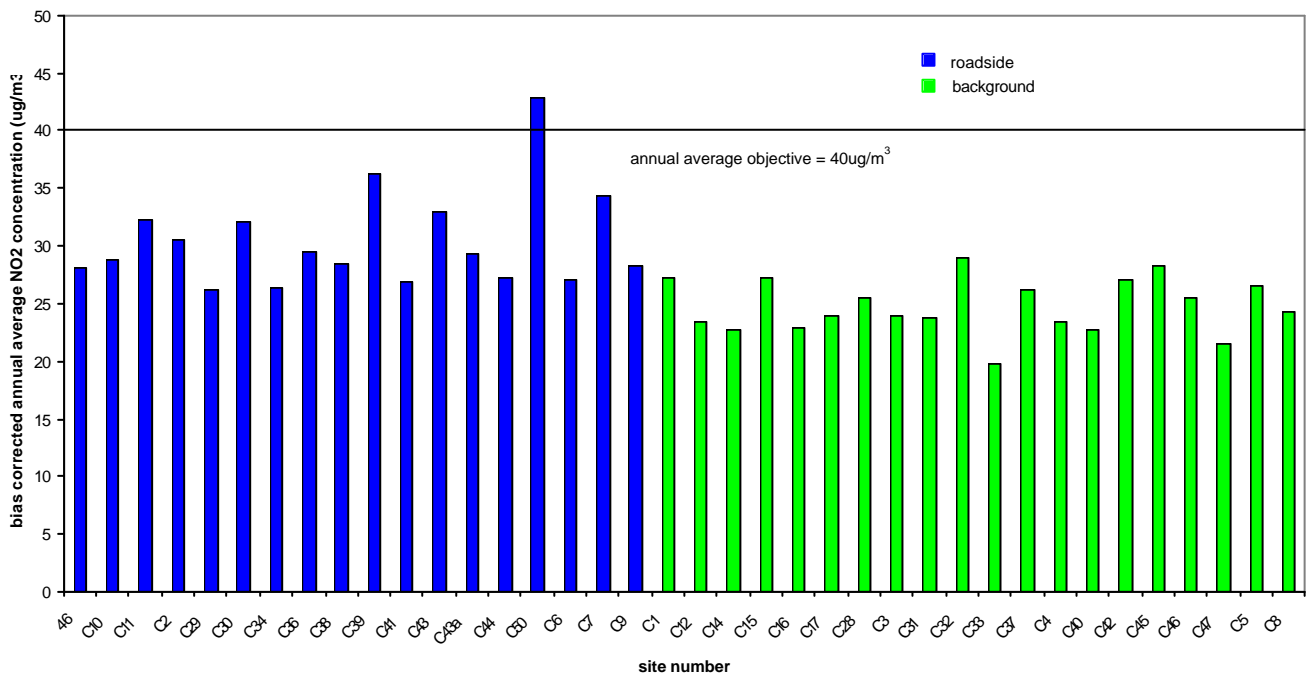
**Figure 19 :** Bias corrected annual average nitrogen dioxide concentrations for survey B tubes outside the AQMA (August 2003 to July 2004)



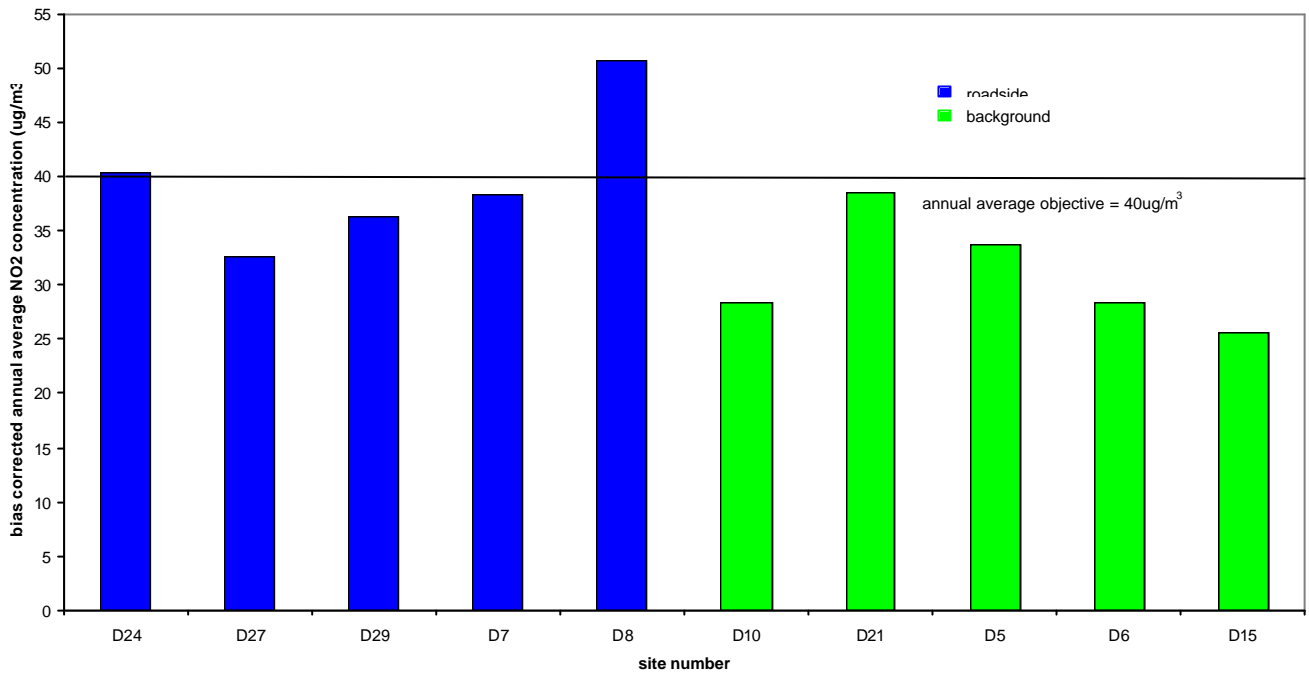
**Figure 20 :** Bias corrected annual average nitrogen dioxide concentrations for survey C tubes outside the AQMA (August 2002 to July 2003)



**Figure 21 :** Bias corrected annual average nitrogen dioxide concentrations for survey C tubes outside the AQMA (August 2003 to July 2004)



**Figure 22 :** Bias corrected annual average nitrogen dioxide concentrations for survey D tubes outside the AQMA (August 2002 to July 2003)



**Figure 23 :** Bias corrected annual average nitrogen dioxide concentrations for survey D tubes outside the AQMA (August 2003 to July 2004)

