

Figure 36 : Bias corrected annual average nitrogen dioxide concentrations for city wide survey 5 tubes inside the AQMA (July 2002 to June 2003)

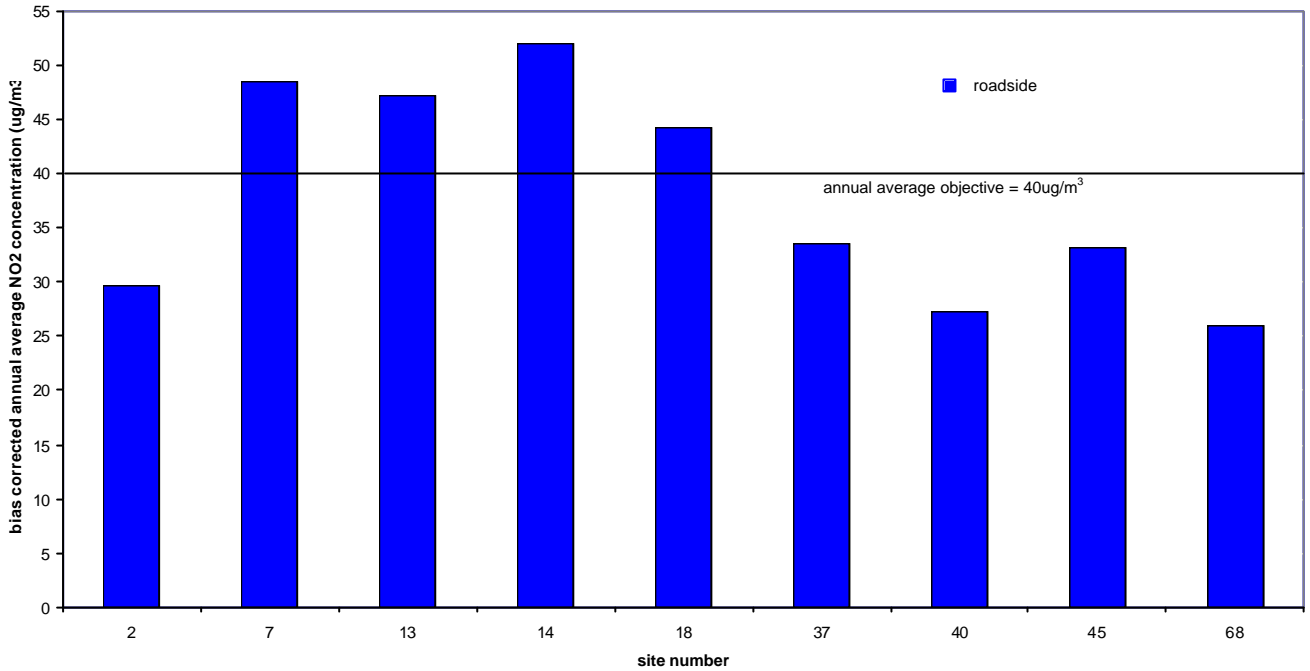


Figure 37 : Bias corrected annual average nitrogen dioxide concentrations for city wide survey 6 tubes inside the AQMA (July 2003 to June 2004)

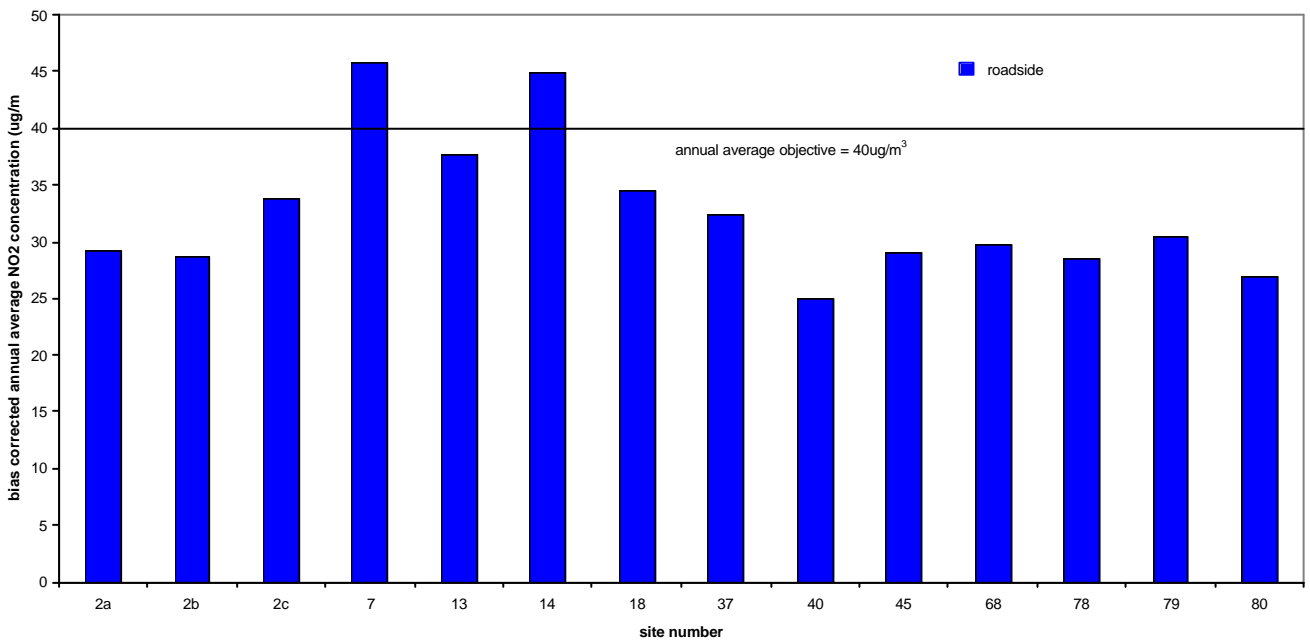


Figure 38 : Bias corrected annual average nitrogen dioxide concentrations for survey A tubes inside the AQMA (August 2002 to July 2003)

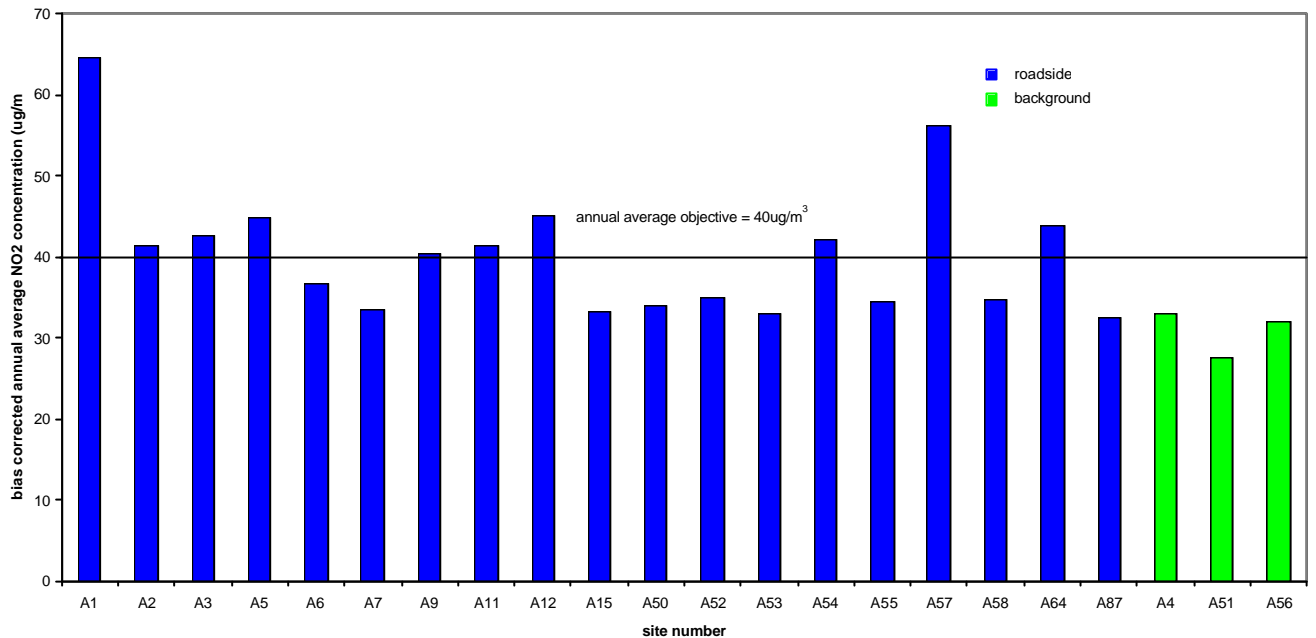


Figure 39 : Bias corrected annual average nitrogen dioxide concentrations for survey A tubes inside the AQMA (August 2003 to July 2004)

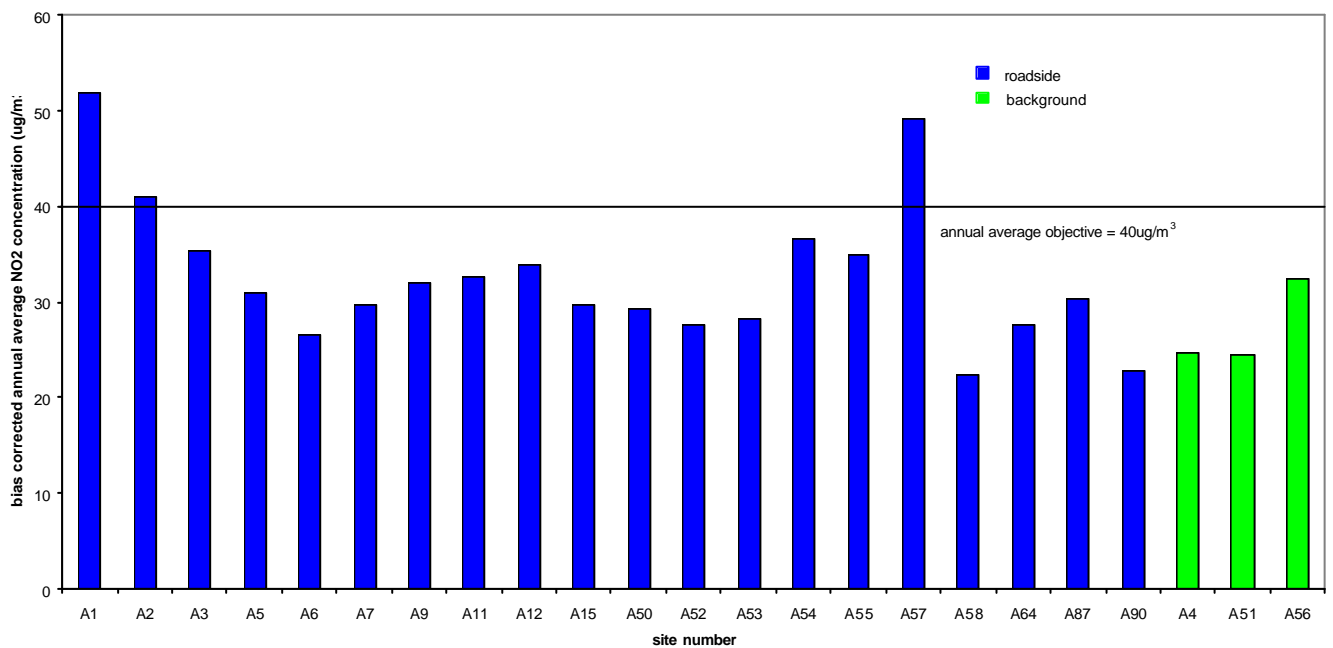


Figure 40 : Bias corrected annual average nitrogen dioxide concentrations for survey B tubes inside the AQMA (August 2002 to July 2003)

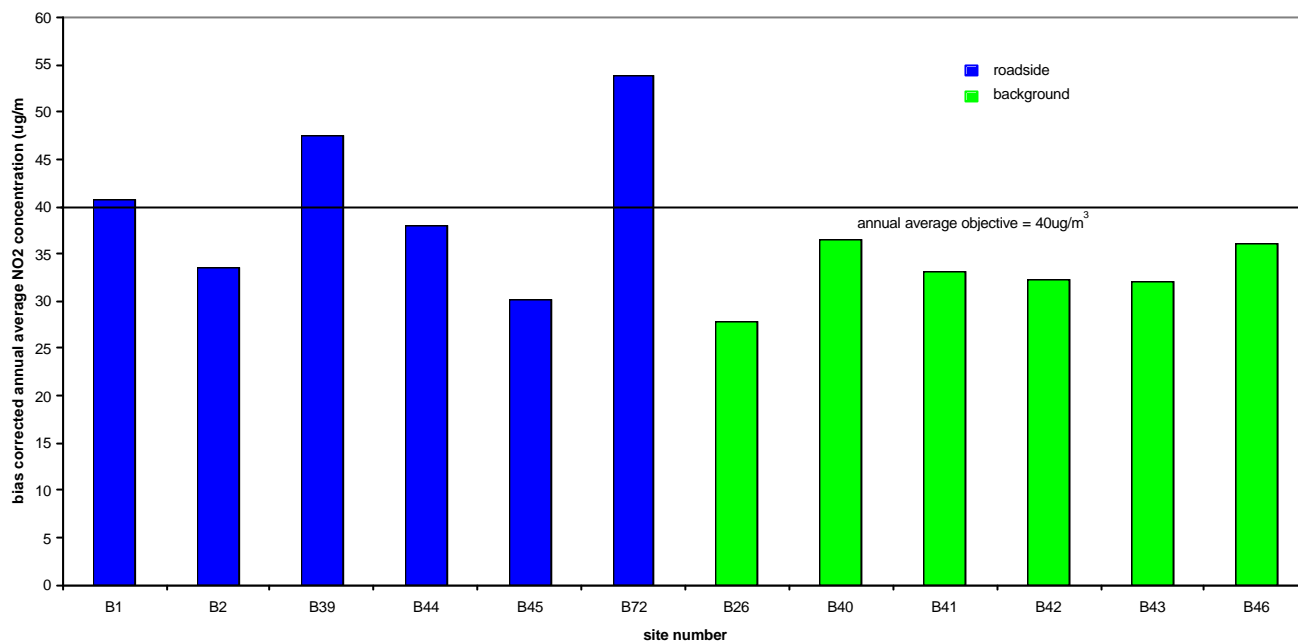


Figure 41 : Bias corrected annual average nitrogen dioxide concentrations for survey B tubes inside the AQMA (August 2003 to July 2004)

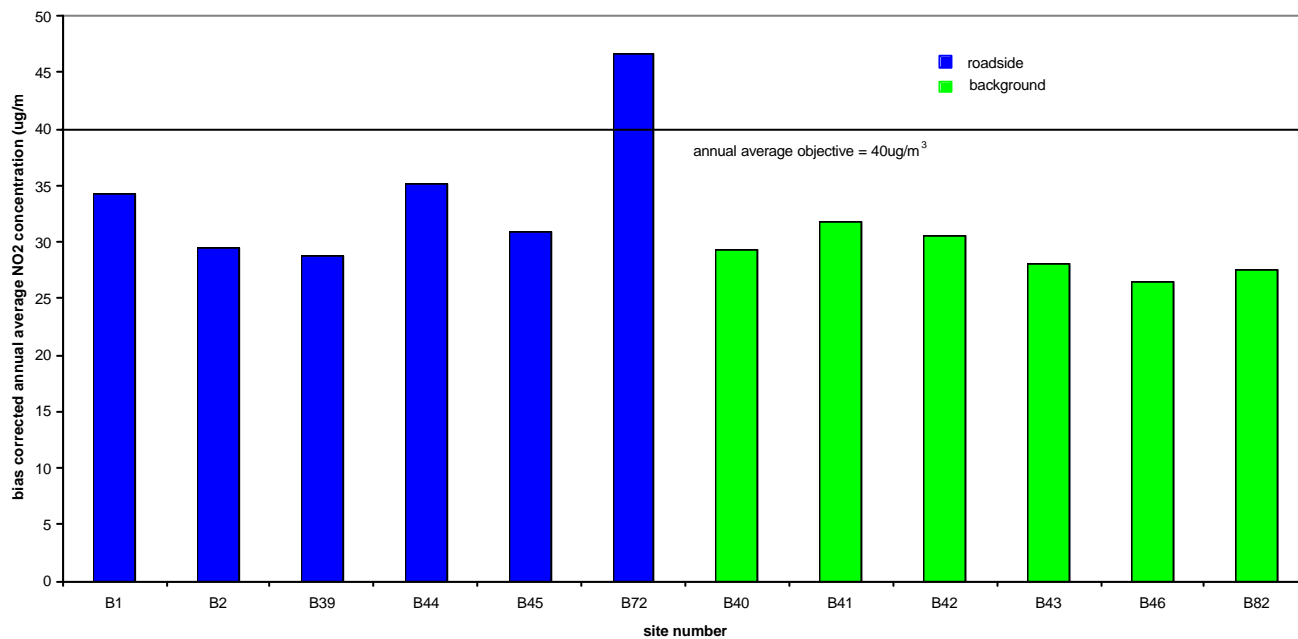


Figure 42 : Bias corrected annual average nitrogen dioxide concentrations for survey C tubes inside the AQMA (August 2002 to July 2003)

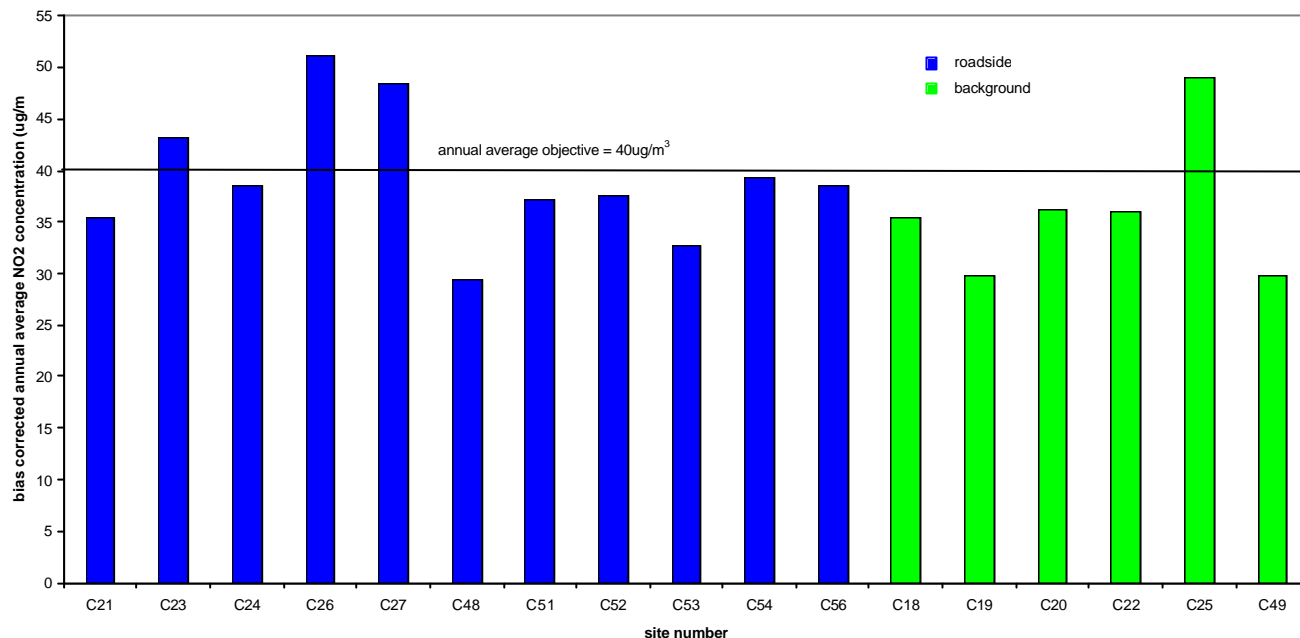


Figure 43 : Bias corrected annual average nitrogen dioxide concentrations for survey C tubes inside the AQMA (August 2003 to July 2004)

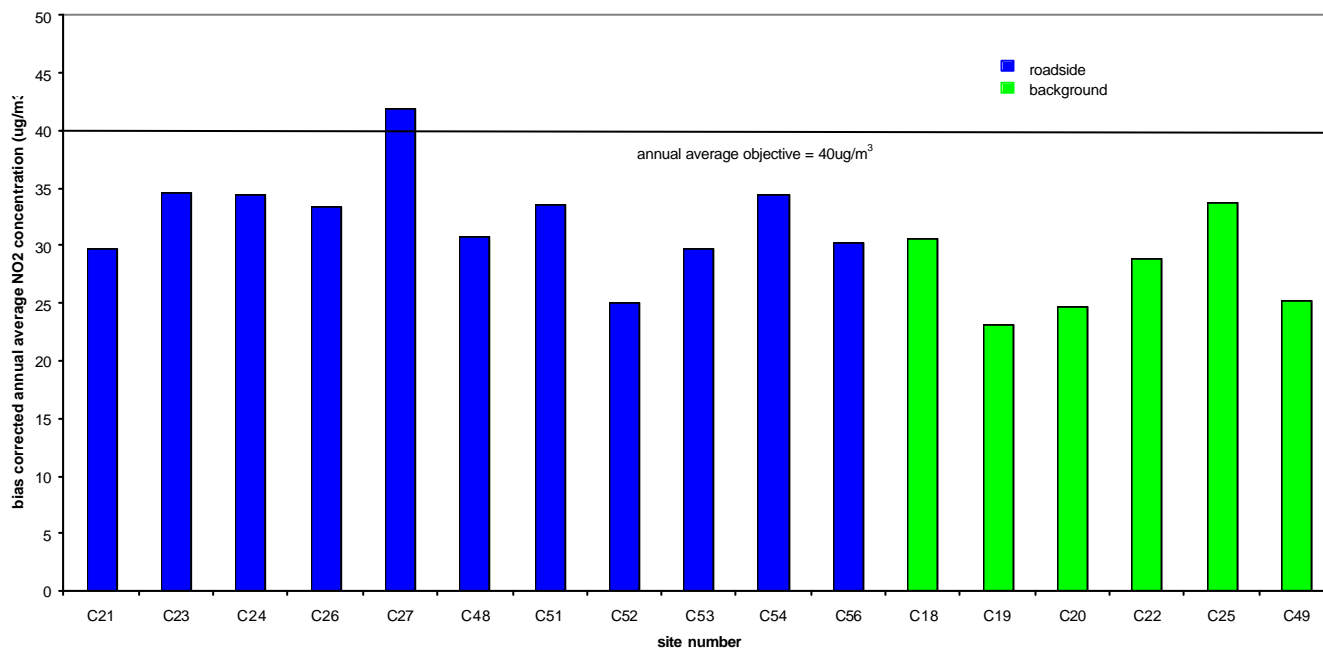


Figure 44 : Bias corrected annual average nitrogen dioxide concentrations for survey D tubes inside the AQMA (August 2002 to July 2003)

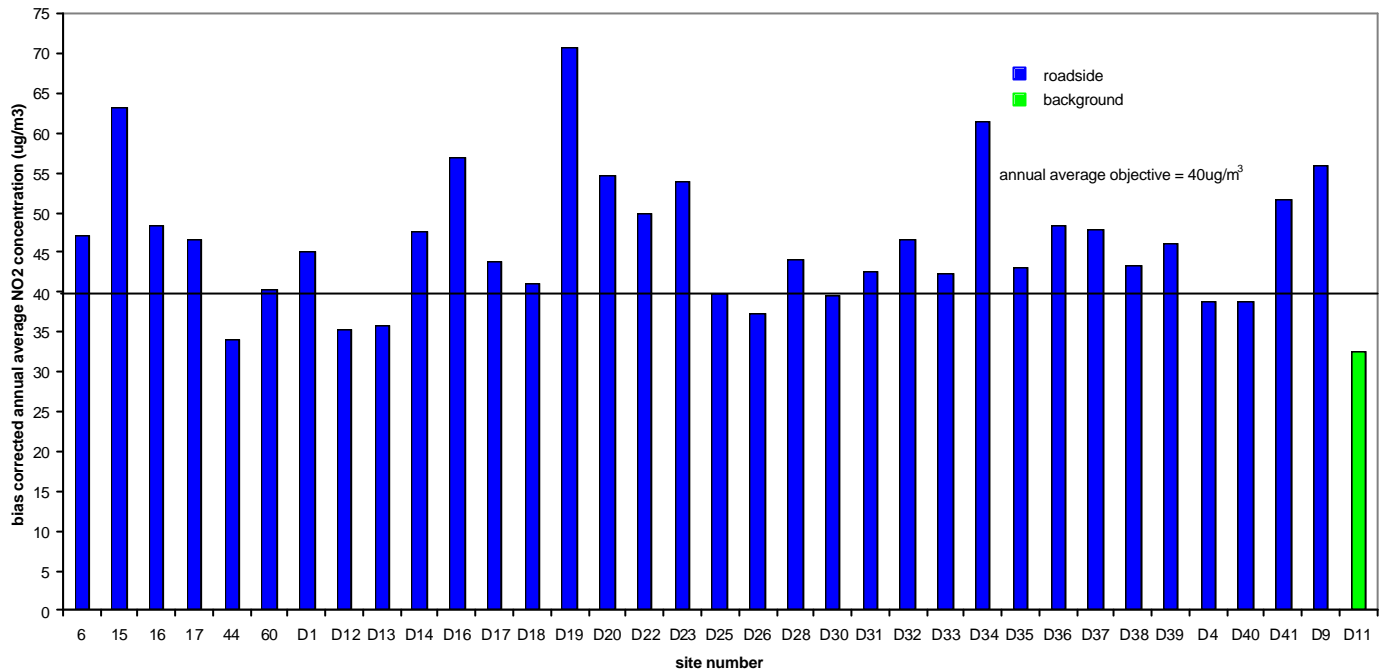


Figure 45 : Bias corrected annual average nitrogen dioxide concentrations for survey D tubes inside the AQMA (August 2003 to July 2004)

